

NERACA PENDIDIKAN DAERAH 2017



KOTA SEMARANG JAWA TENGAH

DATA PENDIDIKAN DAERAH

Satuan Pendidikan **2.104**

| | |
|--------|-------|
| PAUD → | 1.224 |
| SD → | 513 |
| SMP → | 185 |
| SMA → | 75 |
| SMK → | 89 |
| SLB → | 18 |

Peserta Didik **331.506**

| | |
|--------|---------|
| PAUD → | 54.126 |
| SD → | 139.454 |
| SMP → | 64.812 |
| SMA → | 31.996 |
| SMK → | 39.872 |
| SLB → | 1.246 |

Ruang Kelas **9.449**

| | |
|-------|-------|
| SD → | 4.579 |
| SMP → | 2.375 |
| SMA → | 1.134 |
| SMK → | 1.044 |
| SLB → | 317 |

Guru **18.239**

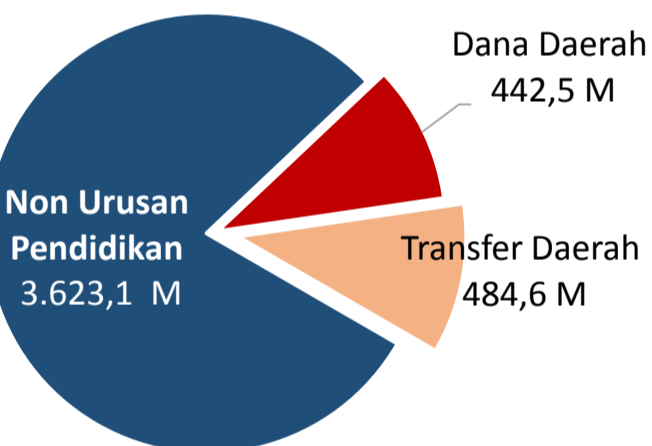
| | |
|--------|-------|
| PAUD → | 2.536 |
| SD → | 6.856 |
| SMP → | 3.921 |
| SMA → | 2.110 |
| SMK → | 2.530 |
| SLB → | 286 |

Sumber: PDSPK, November 2017

Sumber: GTK, Juni 2017

PENDANAAN PENDIDIKAN

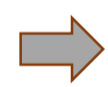
APBD 2017 **Rp4.550,2 M**



Rincian Dana Transfer Daerah Bidang pendidikan

| | |
|-----------------------|---------|
| DAK Fisik | 12,0 M |
| TPG | 191,9 M |
| Tamsil | 3,0 M |
| Tunjangan Khusus Guru | 0,0 M |
| DAU (Gaji GTK PNSD) | 247,5 M |
| BOP PAUD | 30,1 M |

Persentase urusan pendidikan (di luar transfer daerah)



Trend Alokasi Anggaran Pendidikan dalam APBD

| | 2015 | 2016 | 2017 |
|--|-------|-------|-------|
| | 15,9% | 16,1% | 10,9% |

ALOKASI ANGGARAN BANTUAN PEMERINTAH (APBN)

| | |
|-------------|--------|
| PAUD-DIKMAS | 0,8 M |
| SD | 0,4 M |
| SMP | 4,6 M |
| GTK | 58,9 M |
| Total | 64,7 M |

Sumber: Kemendikbud, November 2017

PERSENTASE REALISASI PROGRAM INDONESIA PINTAR

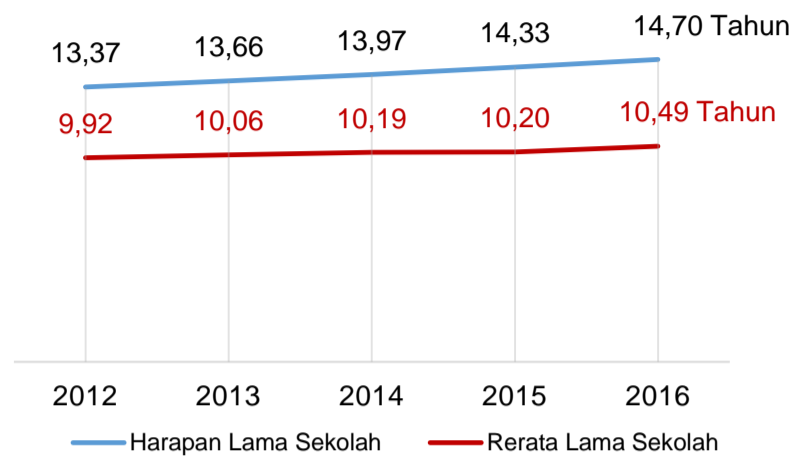
| | SD | SMP | SMA | SMK |
|----------|-------|-------|-------|-------|
| Penerima | 68,6% | 52,7% | 49,1% | 64,4% |
| Anggaran | 71,0% | 59,3% | 51,3% | 70,1% |

Sumber: sipintar.web.id, Desember 2017

Sumber: Kemdagri, November 2017

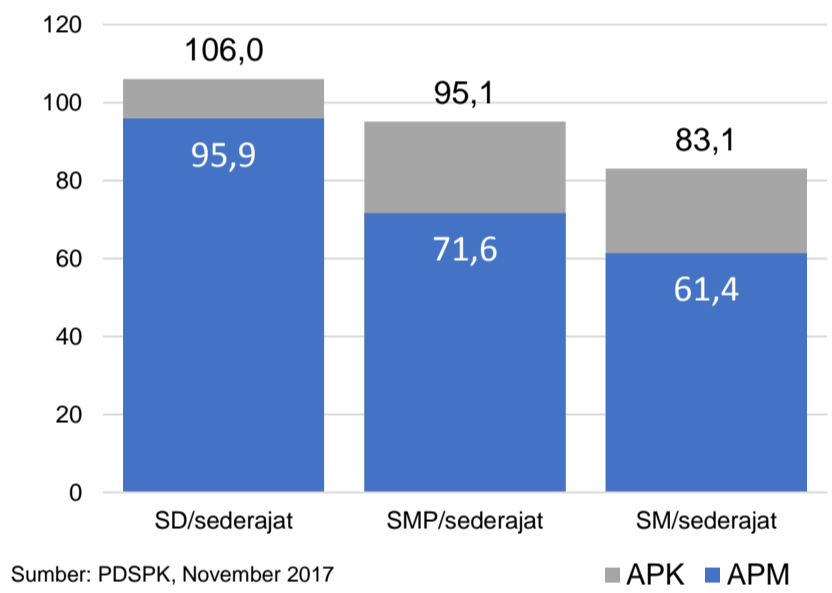
INDEKS PEMBANGUNAN MANUSIA 2016

81,2 JAWA TENGAH **70,0** NASIONAL **70,18**



Sumber: BPS, Oktober 2017

APK DAN APM 2016/2017 (persentase)



Sumber: PDSPK, November 2017

KEBUDAYAAN

| JENIS | JUMLAH |
|--------------------------|--------|
| Cagar Budaya | 6 |
| Desa Adat | 0 |
| Museum | 0 |
| Rumah Budaya Nusantara | 2 |
| Sanggar dan Komunitas | 0 |
| Warisan Budaya Tak Benda | 0 |

Sumber: Ditjen Kebudayaan, November 2017

BAHASA DAERAH

1

Sumber: BPPB, November 2017

RASIO PENDIDIKAN

GURU:SISWA

| SD | SMP | SMA | SMK |
|------|------|------|------|
| 1:20 | 1:17 | 1:15 | 1:16 |

GURU PNS:SISWA

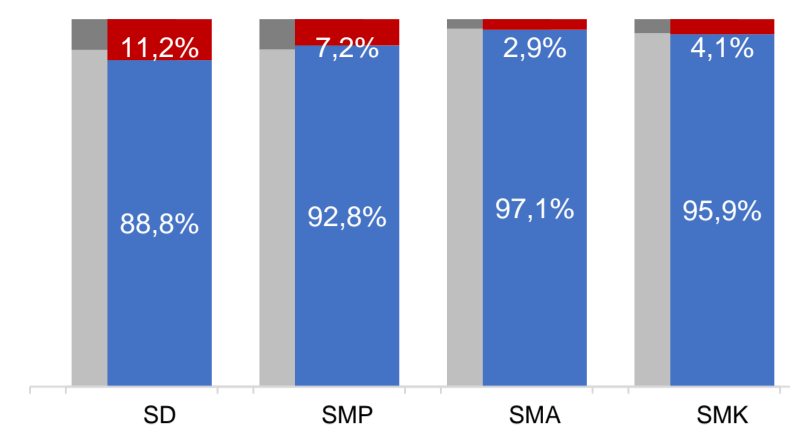
| SD | SMP | SMA | SMK |
|------|------|------|------|
| 1:43 | 1:40 | 1:37 | 1:47 |

ROMBEL:SISWA

| SD | SMP | SMA | SMK |
|------|------|------|------|
| 1:29 | 1:30 | 1:30 | 1:29 |

Sumber: PDSPK, November 2017

KUALIFIKASI GURU



Sumber: Ditjen GTK, 2017

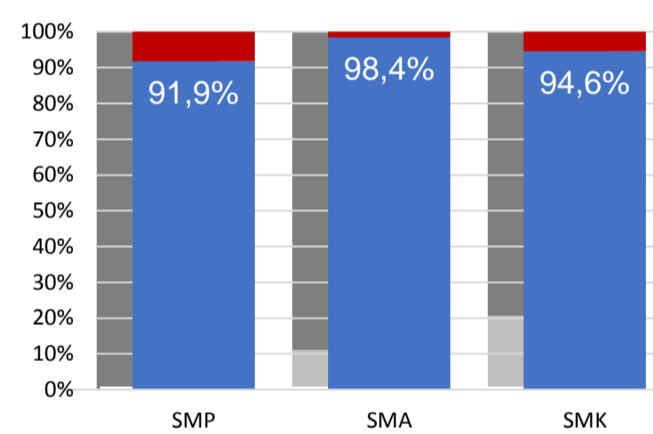
UJI KOMPETENSI GURU PER JENJANG



Sumber: Ditjen GTK, 2016

| | | | | |
|-------|-------|-------|-------|-------|
| Nas. | 54,33 | 58,25 | 61,74 | 58,30 |
| Prov. | 61,88 | 66,14 | 70,10 | 61,91 |
| SD | 65,70 | 68,79 | 72,73 | 64,51 |
| SMP | | | | |
| SMA | | | | |
| SMK | | | | |

PERSENTASE PESERTA UNBK PER JENJANG



Sumber: Puspendik, November 2017

HASIL UN

| | | | | |
|---------|-------|-------|-------|-------|
| Nas. | 54,25 | 52,87 | 47,93 | 53,75 |
| Prov. | 54,06 | 58,03 | 53,29 | 57,59 |
| SMP | 60,11 | 62,61 | 56,79 | 59,40 |
| SMA IPA | | | | |
| SMA IPS | | | | |
| SMK | | | | |

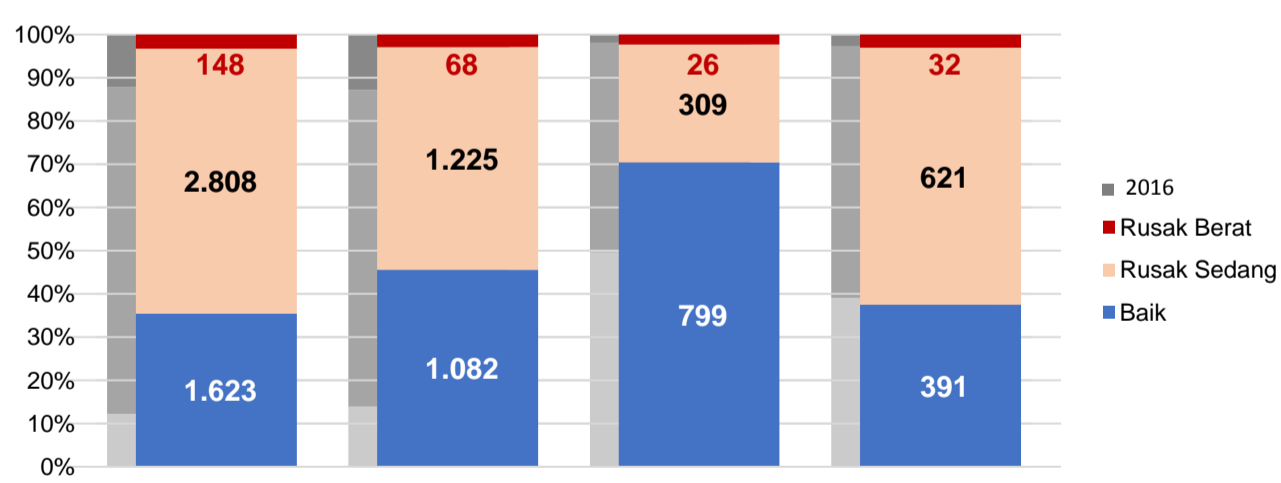
Sumber: Puspendik, November 2017

SKOR IIUN

| | | | | |
|---------|-------|-------|-------|-------|
| Nas. | 76,65 | 86,69 | 85,65 | 92,61 |
| Prov. | 87,25 | 95,94 | 94,45 | 99,71 |
| SMP | 96,76 | 99,71 | 99,20 | 98,82 |
| SMA IPA | | | | |
| SMA IPS | | | | |
| SMK | | | | |

Sumber: Puspendik, November 2017

KONDISI RUANG KELAS



Sumber: PDSPK, November 2017

SEKOLAH RINTISAN PELAKSANA PPK

| SD | SMP | TOTAL |
|----|-----|-------|
| 3 | 8 | 11 |

Sumber: Kemendikbud, September 2017

GURU KEAHLIAN GANDA

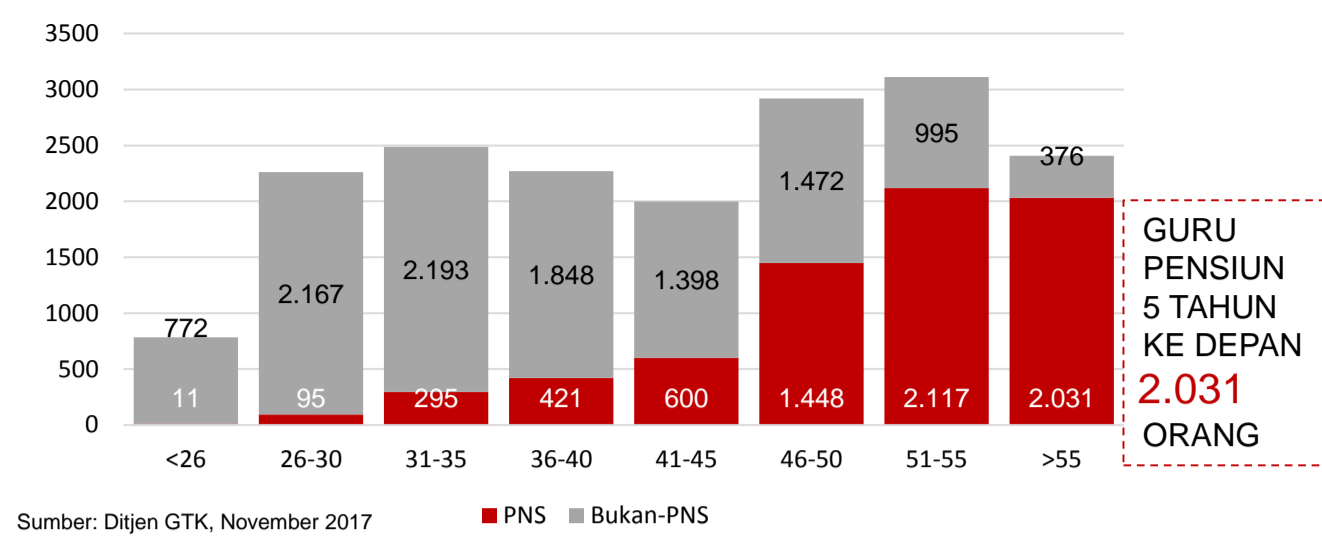
33

GURU GARIS DEPAN

0

Sumber: Ditjen GTK, November 2017

GURU MENURUT USIA



Sumber: Ditjen GTK, November 2017

SISWA PUTUS SEKOLAH DAN MENGULANG

| | SD | SMP | SMA | SMK |
|---------------|-------|-----|-----|-----|
| PUTUS SEKOLAH | 190 | 87 | 104 | 747 |
| MENGULANG | 1.108 | 177 | 52 | 115 |

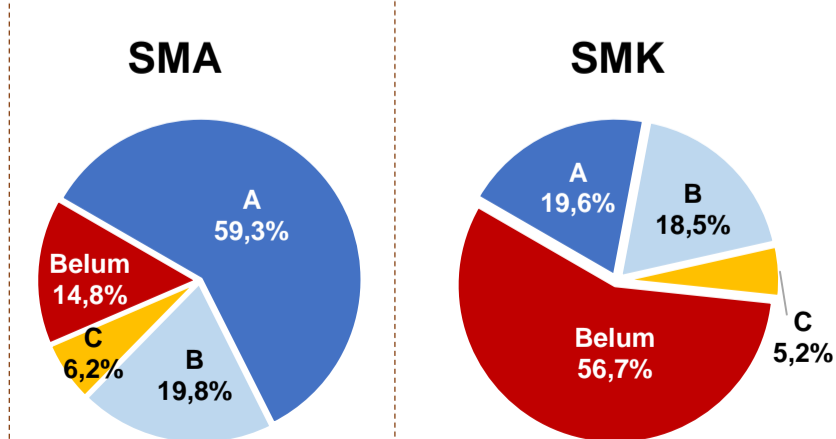
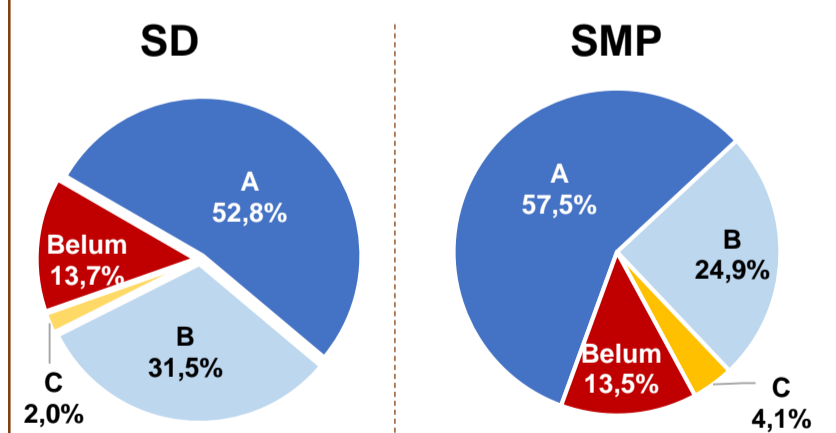
Sumber: PDSPK, November 2017

PRESTASI SISWA

| | |
|-------------------------|-----------|
| OLIMPIADE NASIONAL | 20 |
| OLIMPIADE INTERNASIONAL | 4 |

Sumber: Ditjen Dikdasmen, November 2017

AKREDITASI S/M



Sumber: BAN-S/M, Desember 2017